



Austin, Texas

Ellie May:
A new urban experience
brought to you by
StoryBuilt.



Work It.

-Missy Elliot

East Austin's new bright star is Ellie May. This dream of a modern urban village will provide community, greenspace, and a small working farm.

At center stage is the 76,720 SF creative office building, perfectly designed to bring new life to this enchanted setting. Designed with private and shared balconies with an outstanding view of downtown, the site offers reserved executive parking and fully covered employee parking.

84 residential units are built into the grove of trees, providing an exceptional living opportunity.

Easy access to Springdale's popular neighborhood amenities make this an ideal location. We're planning to create a new neighborhood dining favorite by offering a small organic farm plot and a lovely restaurant premises.



This image is preliminary and for illustrative purposes only. Final finishes and colors will vary and are subject to change.

Featured Attractions



Electric Vehicle
Charging Stations



Mobility Hub



Organic
Urban Farm



Hike & Bike Trail



Leasable Office
Space



Minutes to
Downtown



Minutes to
Airport



Available Secure
Parking



Delivery Date

A Look Back

- 1992

Owners Glenn and Paula Foore purchase land in a vacant, overrun area on Austin's east side.
- 2009

Glenn and Paula start their organic farm, providing organic produce to residents just ten miles from downtown. Fresh.
- 2010

Architect Eric Rauser is brought on to reimagine the existing farmhouse into someplace warm, inviting, and chic. The Foorees now farm full-time and use the farm as an event location and popular school field trip destination.
- 2012

Sonya Coté and her husband, David, opened Eden East.
- 2018

StoryBuilt purchases land. Plans designed to maintain a small farm and develop a farm-to-table restaurant on site.
- 2022

Q1, StoryBuilt to break ground.





This image is preliminary and for illustrative purposes only. Final finishes and colors will vary and are subject to change.

Big Picture

Generous proportions. Smart Design.
Minutes to Downtown. Easy and Elegant.

Meet me on the East Side.

-Benny Blanco, Halsey & Khalid



Heigh-ho.

- Walt Disney Music

Exterior View

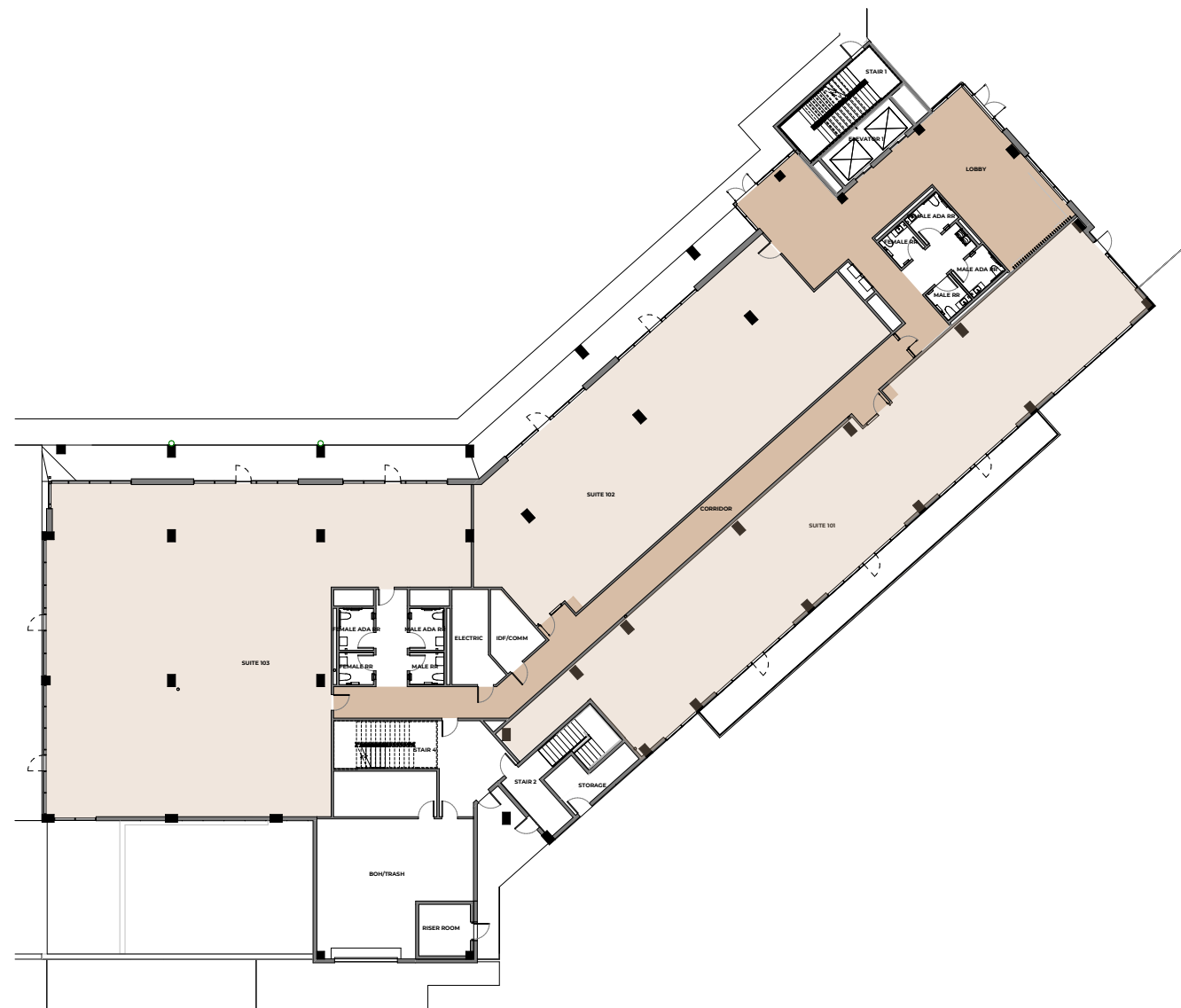
What if your office was the most beautiful place ever where everything was just right? Dream come true.



Once in a lifetime.
This heady mix of
greenspace, mature trees,
and beautiful, intentional
design is yours.
Work connected.



FLOOR PLAN | LEVEL 1
17' CEILINGS



OFFICE LEASING INFO

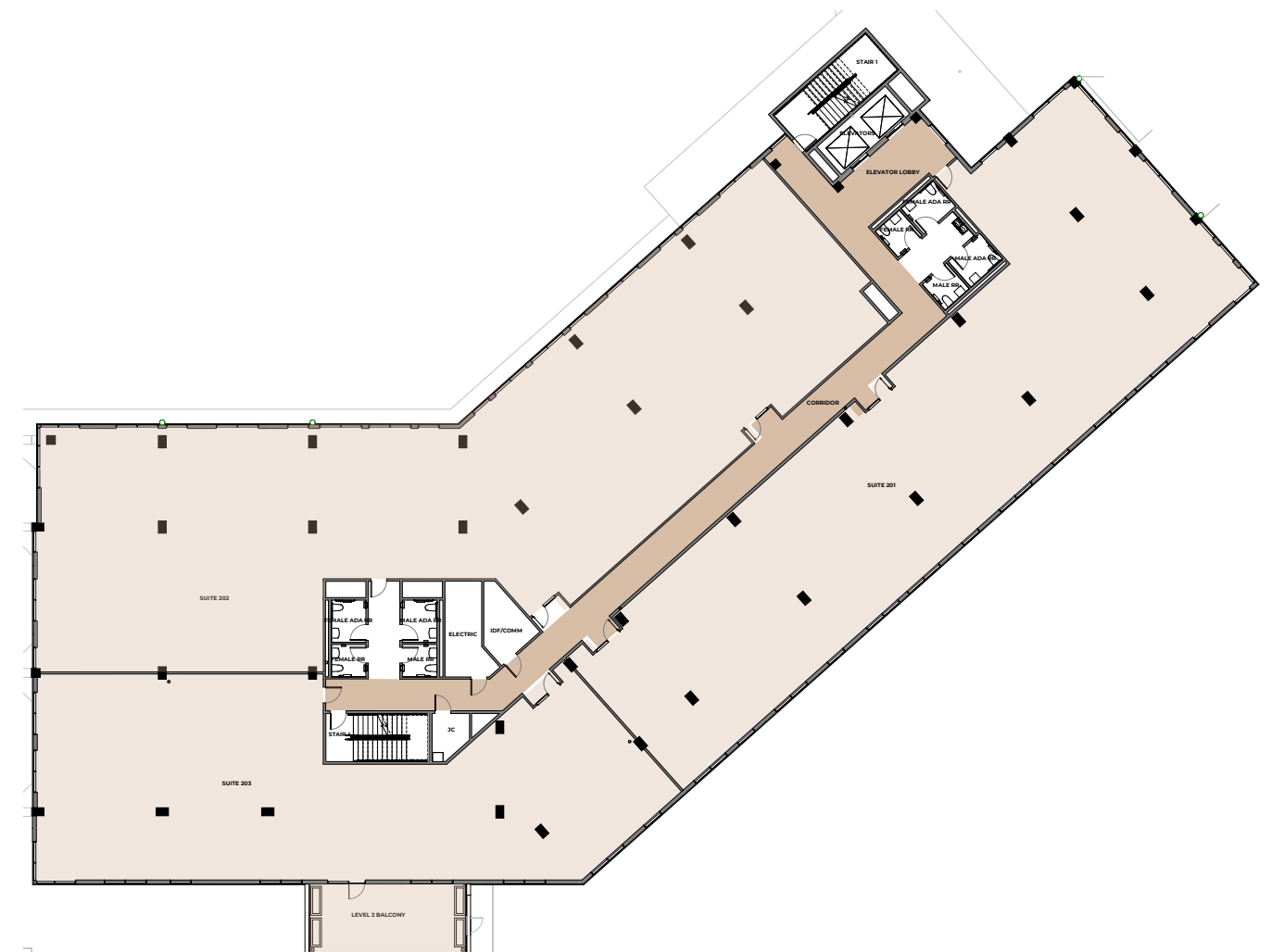
PATRICK LEY, SIOR, CCIM
512.505.0002
pley@ecrtx.com

JASON STEINBERG, SIOR
512.505.0004
jsteinberg@ecrtx.com



755 Springdale Road
AUSTIN, TX 78702

FLOOR PLAN | LEVEL 2
12' CEILINGS



OFFICE LEASING INFO

PATRICK LEY SIOR, CCIM
512.505.0002
pley@ecrtx.com

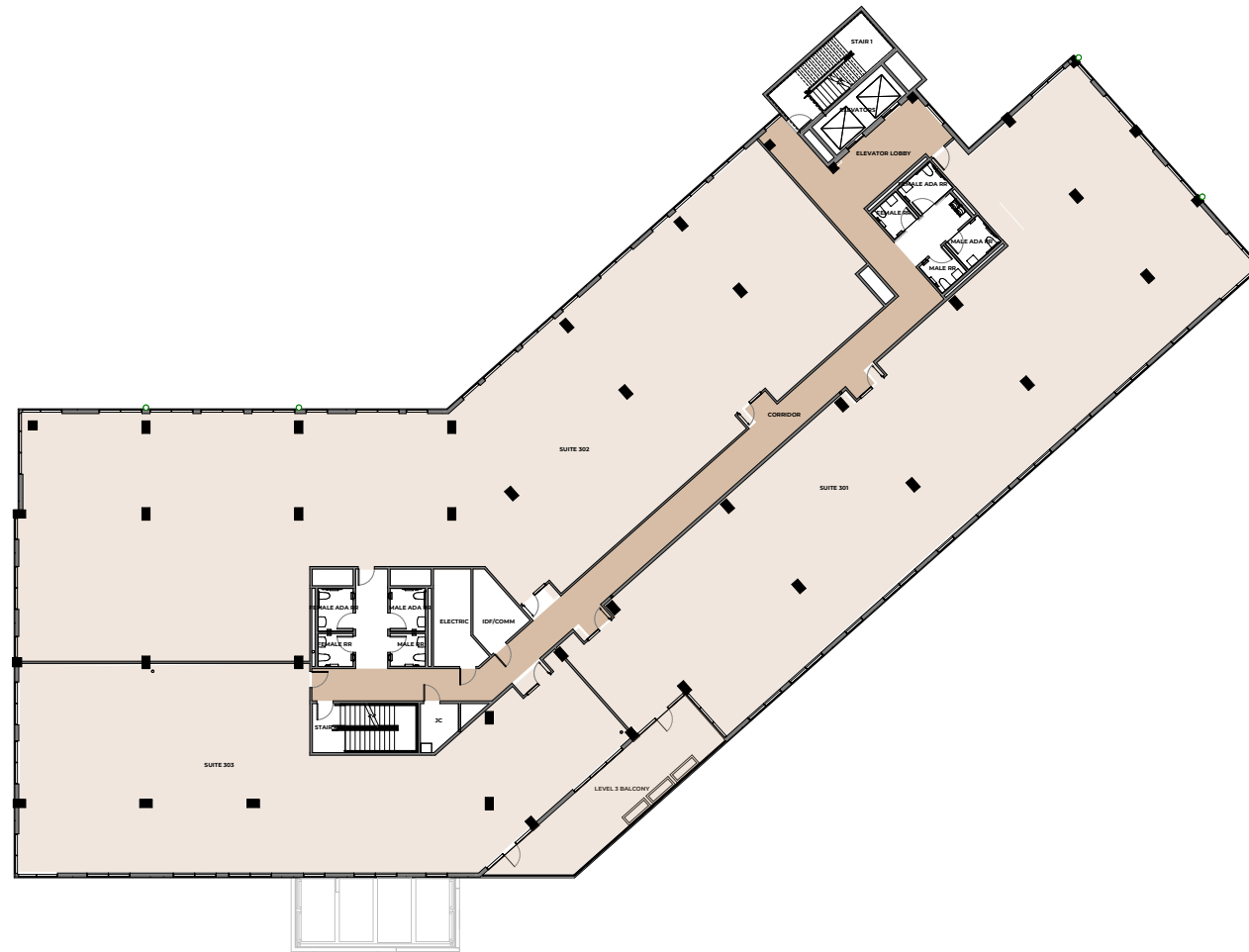
JASON STEINBERG, SIOR
512.505.0004
jsteinberg@ecrtx.com



All images are preliminary and for illustrative purposes only.
Final finishes and colors will vary and are subject to change.

755 Springdale Road
AUSTIN, TX 78702

FLOOR PLAN | LEVEL 3
12' CEILINGS



	LEVEL 1	LEVEL 2	LEVEL 3	LEVEL 4
SF	15,211 RSF	20,765 RSF	20,347 RSF	20,396 RSF

OFFICE LEASING INFO

PATRICK LEY, SIOR, CCIM
512.505.0002
pley@ecrtx.com

JASON STEINBERG, SIOR
512.505.0004
jsteinberg@ecrtx.com



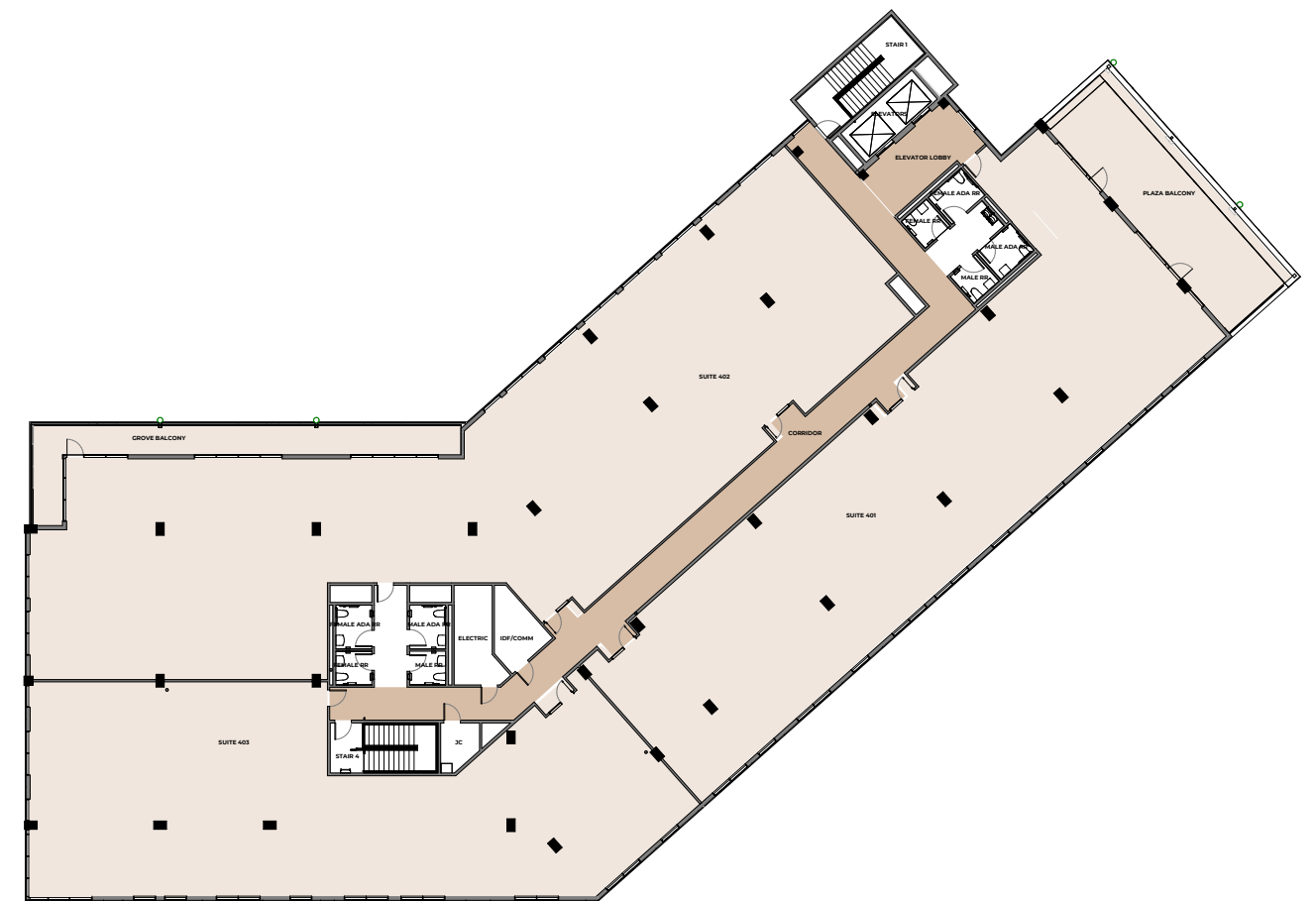
755 Springdale Road
AUSTIN, TX 78702



All images are preliminary and for illustrative purposes only
Final finishes and colors will vary and are subject to change

FLOOR PLAN | LEVEL 4

12' CEILINGS



	LEVEL 1	LEVEL 2	LEVEL 3	LEVEL 4
SF	15,211 RSF	20,765 RSF	20,347 RSF	20,396 RSF

OFFICE LEASING INFO

PATRICK LEY SIOR, CCIM
512.505.0002
pley@ecrtx.com

JASON STEINBERG, SIOR
512.505.0004
jsteinberg@ecrtx.com



All images are preliminary and for illustrative purposes only
Final finishes and colors will vary and are subject to change

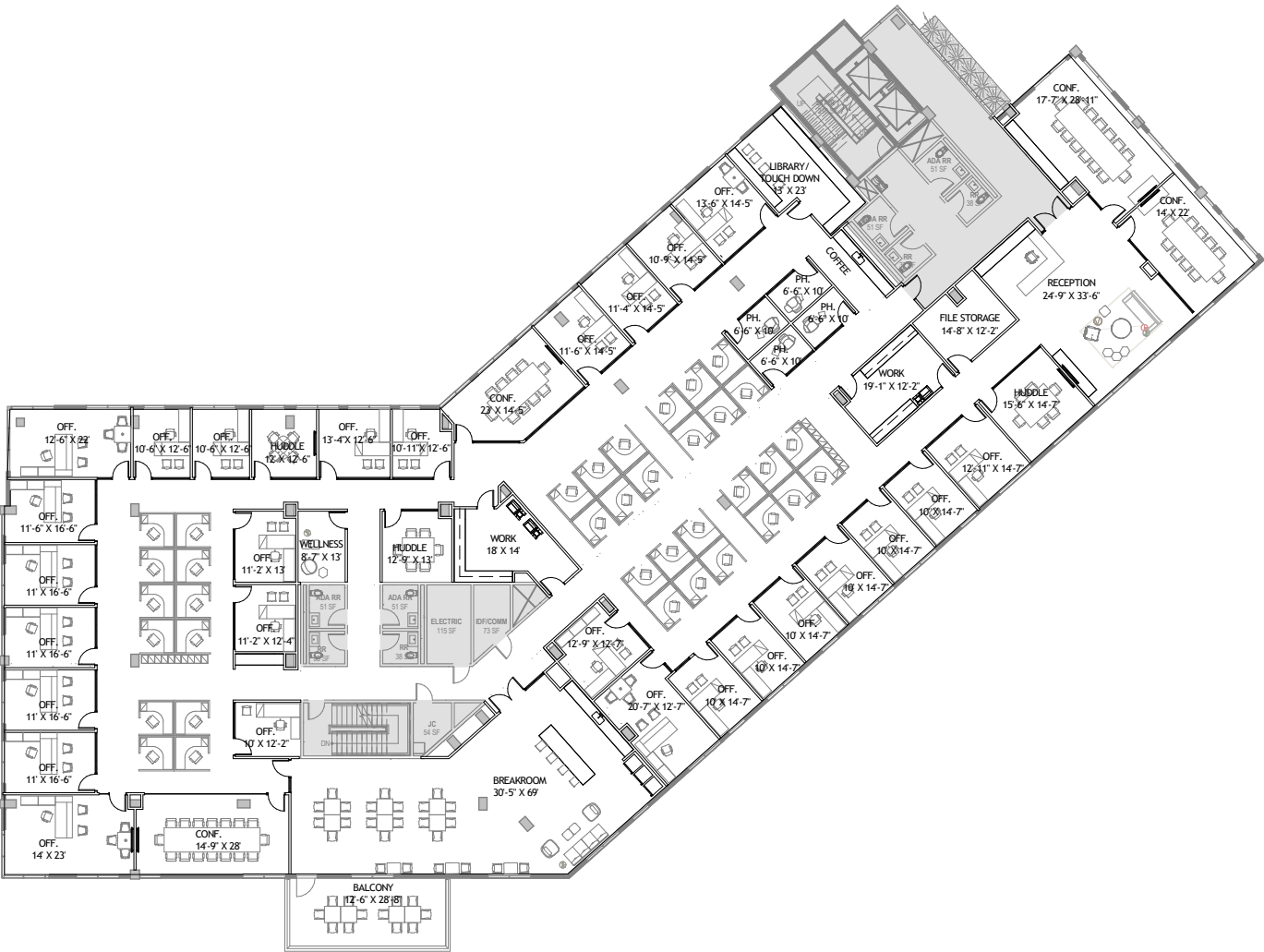
755 Springdale Road
AUSTIN, TX 78702



FLOOR PLAN | LEVEL 2

12' FLOOR TO FLOOR HEIGHT

TRADITIONAL OFFICE LAYOUT



	LEVEL 1	LEVEL 2	LEVEL 3	LEVEL 4
SF	15,211 RSF	20,765 RSF	20,347 RSF	20,396 RSF

OFFICE LEASING INFO

PATRICK LEY, SIOR, CCIM
512.505.0002
pley@ecrtx.com

JASON STEINBERG, SIOR
512.505.0004
jsteinberg@ecrtx.com



All images are preliminary and for illustrative purposes only. Final finishes and colors will vary and are subject to change.

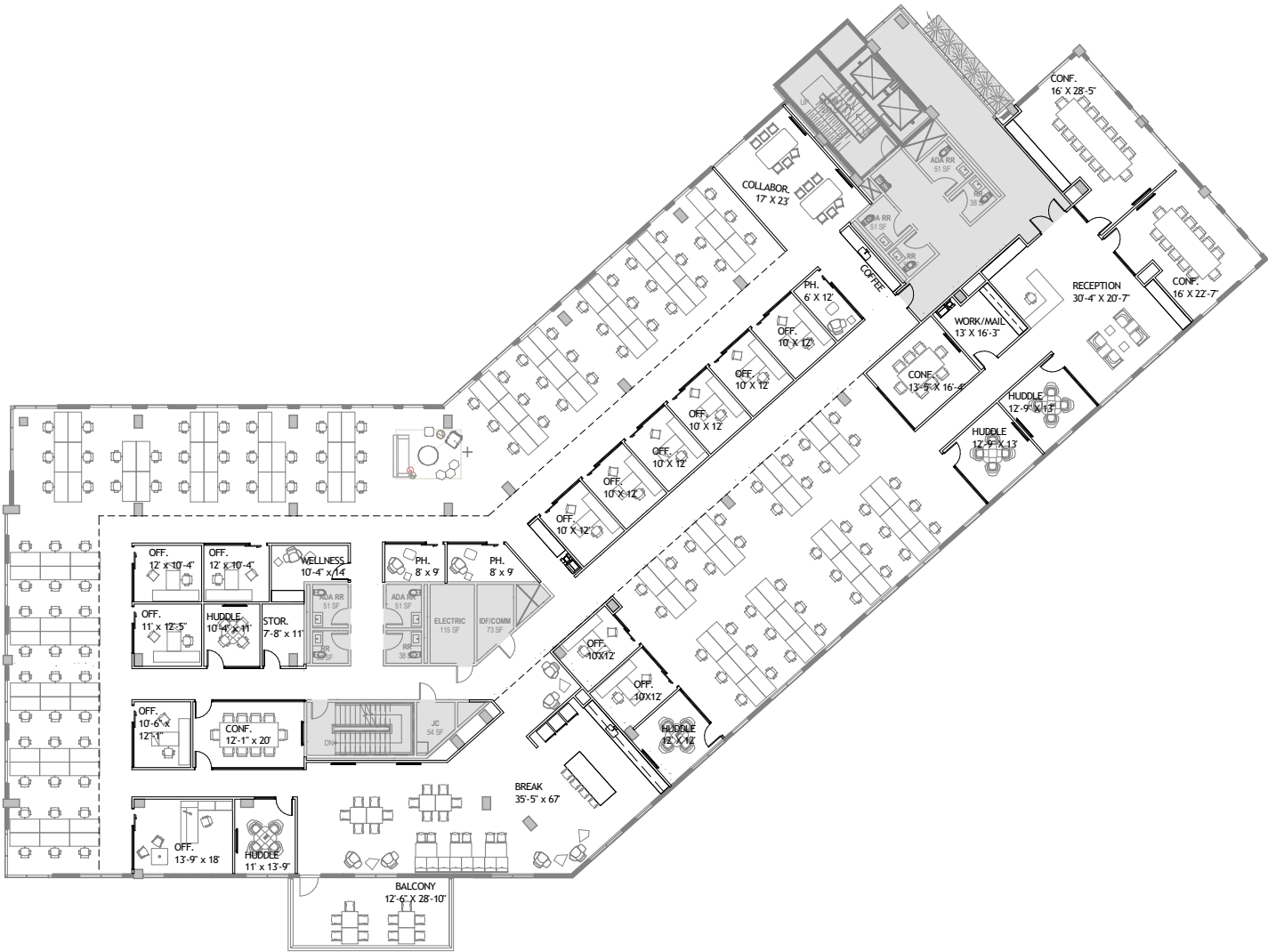


755 Springdale Road
AUSTIN, TX 78702

FLOOR PLAN | LEVEL 2

12' FLOOR TO FLOOR HEIGHT

OPEN OFFICE LAYOUT



	LEVEL 1	LEVEL 2	LEVEL 3	LEVEL 4
SF	15,211 RSF	20,765 RSF	20,347 RSF	20,396 RSF

OFFICE LEASING INFO

PATRICK LEY SIOR, CCIM
512.505.0002
pley@ecrtx.com

JASON STEINBERG, SIOR
512.505.0004
jsteinberg@ecrtx.com



All images are preliminary and for illustrative purposes only. Final finishes and colors will vary and are subject to change.



755 Springdale Road
AUSTIN, TX 78702

Treasure Map

Eats & Sips

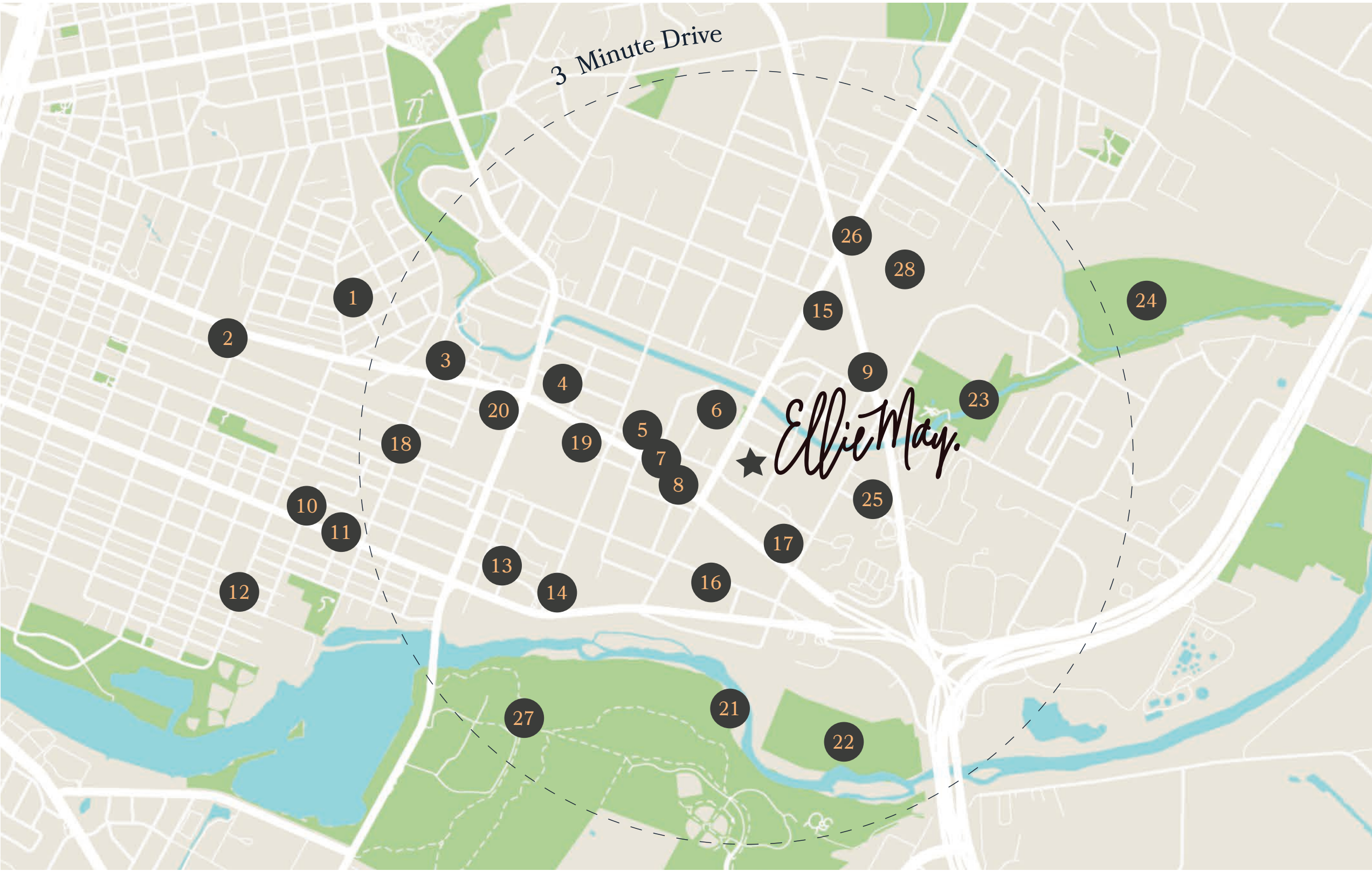
- 1. Veracruz All Natural
- 2. Whislers
- 3. Casa Colombia
- 4. Happy Foods Swoop & Wine Garden
- 5. B Cooper BBQ
- 6. Sa-Ten
- 7. Distant Relatives
- 8. Kinda Tropical
- 9. Dan's Hamburgers
- 10. Juan in a Million
- 11. La Barbecue
- 12. Laundrette
- 13. Lustre Pearl East
- 14. Grizzelda's
- 15. Austin Eastciders Taproom
- 16. Central Machine Works
- 17. Justine's
- 18. Greater Goods Coffee Roasting
- 19. Flitch Coffee

Retail

- 20. H-E-B

Parks & Recreation

- 21. Secret Beach
- 22. Colorado River Park
- 23. Govalle Neighborhood Park
- 24. East Boggy Creek Greenbelt
- 25. Urban Axes Austin
- 26. Lift ATX
- 27. Roy G. Guerrero Disc Golf Course
- 28. Austin Bouldering Project



Work where you love.

Exterior View

Easy, elegant designs are ready for you to make your mark.



This image is preliminary and for illustrative purposes only. Final finishes and colors will vary and are subject to change.

storybuilt.

WHO WE ARE

StoryBuilt is a developer and builder based in Austin, Texas. We specialize in urban infill, and strive to work sustainably. We started in real estate investments in 2001 and began investing in properties in Austin in 2006. StoryBuilt now works in Austin, Dallas, San Antonio, Denver, and Seattle. We've grown to 135 professionals who specialize in collaborative creation as we continue to design and build energy efficient, green urban communities.

Frank.



MEET FRANK

A new urban village on South 1st.

63 new homes: Condos, townhomes, and single family, plus retail and commercial – Frank has it all. Public spaces and a grove of live oaks help you live connected. Dog wash, underground parking, and co-working space keep you busy. Private gym and personal storage spaces help you keep everything under control. Built sustainably in the historic Bouldin Creek neighborhood and the vibrant South First District.

Inside, you'll find contemporary, sophisticated, liveable space. Each floor plan offers flexibility, efficiency, and not a single wasted square foot. Outside, you're in the middle of the best Austin has to offer.

Willa.



MEET WILLA

An Urban Village for Real Life.

59 Condominium homes in Bouldin Creek, just four blocks from the heart of SoCo. We designed Willa with you in mind.

Elegant, open, and chic, these homes have the right mix of everything you want. We love the neighborhood - it's historic and vibrant so you can always find something new to explore. Walk to cafes, music, and shopping. There's a real buzz to this place. Coffee, cocktails, and people make it go from early til late.



TO SCHEDULE A TOUR, PLEASE REACH OUT TO

PATRICK LEY SIOR, CCIM
512.505.0002
pley@ecrtx.com

JASON STEINBERG, SIOR
512.505.0004
jsteinberg@ecrtx.com

storybuilt.com

WORK WHERE YOU LOVE.



Meet Ellie May:

A working dog's story.

Farm dogs have a big job, and Ellie May handles it with ease. Her favorite part of the job? Greeting each visitor with a friendly bark. That's how you know you've arrived. It's not every dog that has a handmade soap named after her, but Ellie May has that certain something. Canine perfection.

storybuilt.

900 SOUTH 1ST STREET, SUITE 110
AUSTIN, TX 78704



Patrick Ley, SIOR, CCIM
512.505.0002
pley@ecrtx.com

Jason Steinberg, SIOR
512.505.0004
jsteinberg@ecrtx.com