



LEASE	2512 SOUTH IH-35 // AUSTIN, TEXAS // 78704	
	OFFICE	STEPHEN PANNES SPANES@ECRTX.COM 512.505.0018



OFFICE // FOR LEASE



*The Summit Point office building is located along IH-35 in South Austin and only a few miles south of Downtown Austin.*

#### AVAILABILITY

<b>Suite 120</b>	2,002 RSF
<b>Suite 200</b>	8,210 RSF (Available 8/1/22)
<b>Suite 350</b>	2,415 RSF

#### FEATURES

- 25,000 SF building total
- IH-35 visibility
- Convenient ingress/egress (nearby access to I-35, Oltorf, Hwy 290 and St. Edwards Dr.)
- Lobby seating area
- Parking ratio of 3.33 per 1,000 RSF
- Traffic count of over 200,000 cars/day on IH-35
- 5 minutes to Downtown Austin
- 10 minutes from Austin Bergstrom International Airport
- Ideal for professional office or creative use
- Wide range of suite sizes

2512 SOUTH IH-35 // AUSTIN, TEXAS 78704

FOR MORE INFORMATION

STEPHEN PANNES  
SPANES@ECRTX.COM // 512.505.0018

ECRTX.COM

## AMENITY MAP

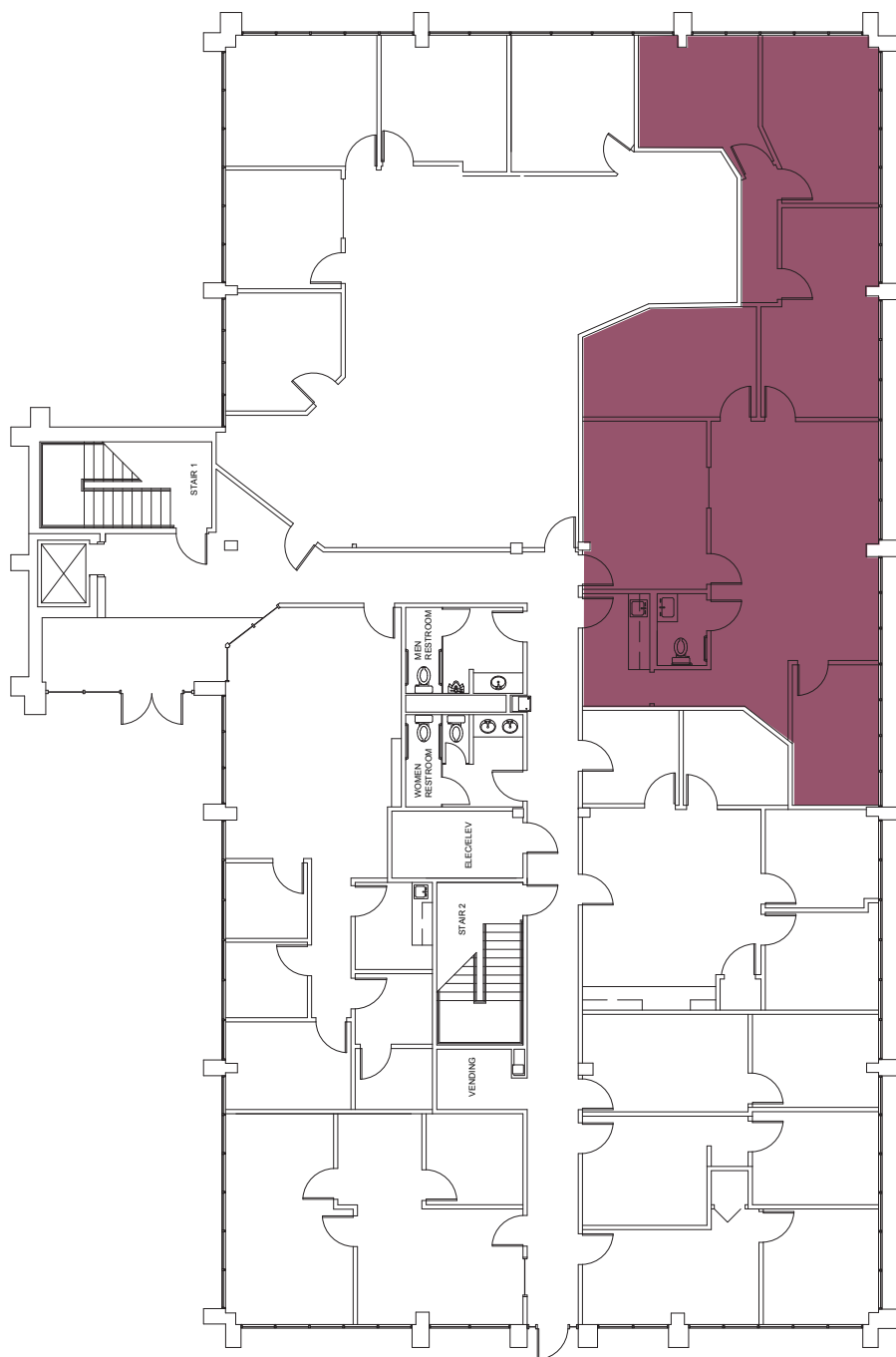


SUMMIT POINT

121 PICKLE ROAD

1

LEVEL ONE



**Suite 120**

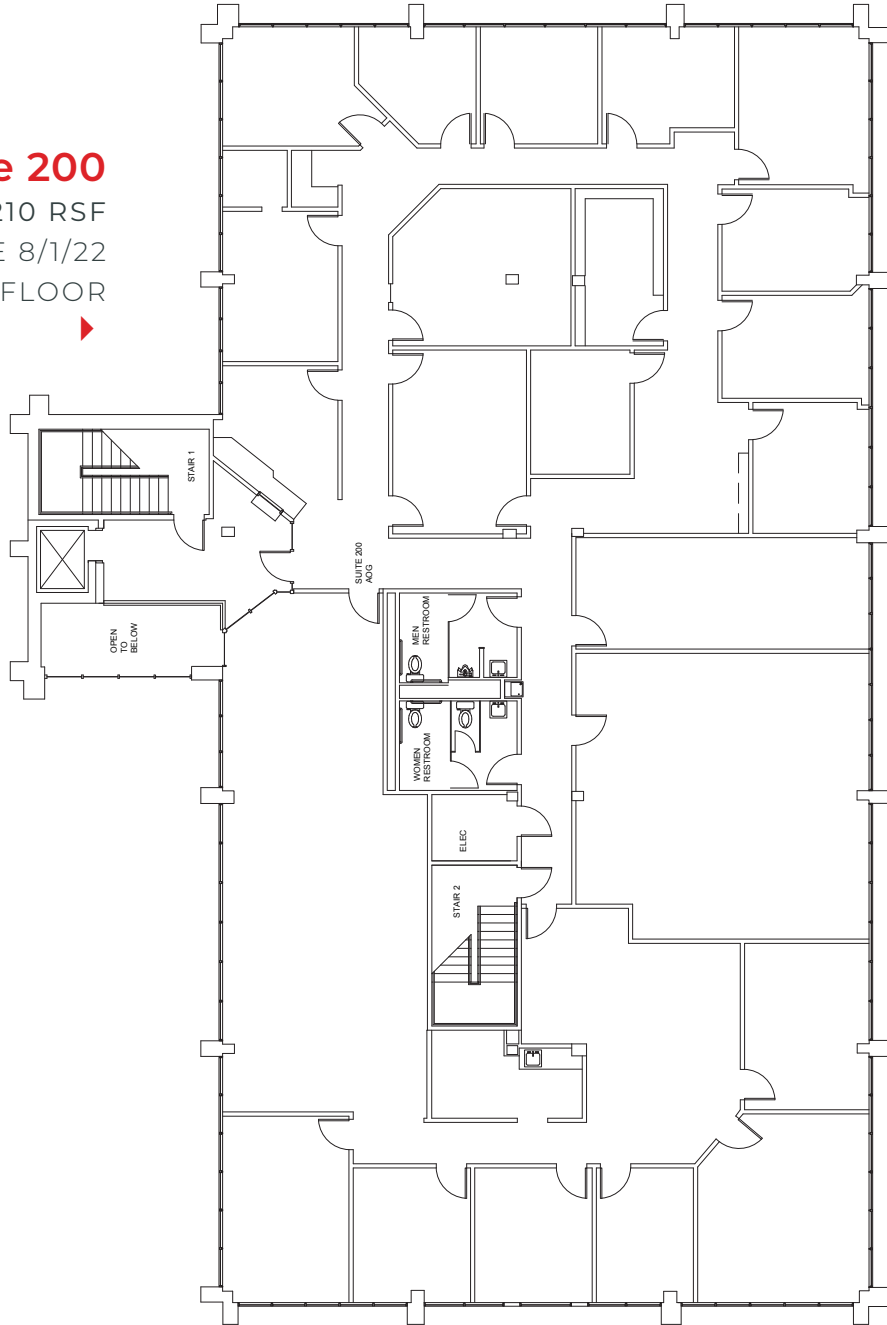
2,002 RSF



2

LEVEL  
TWO

**Suite 200**  
8,210 RSF  
AVAILABLE 8/1/22  
FULL FLOOR



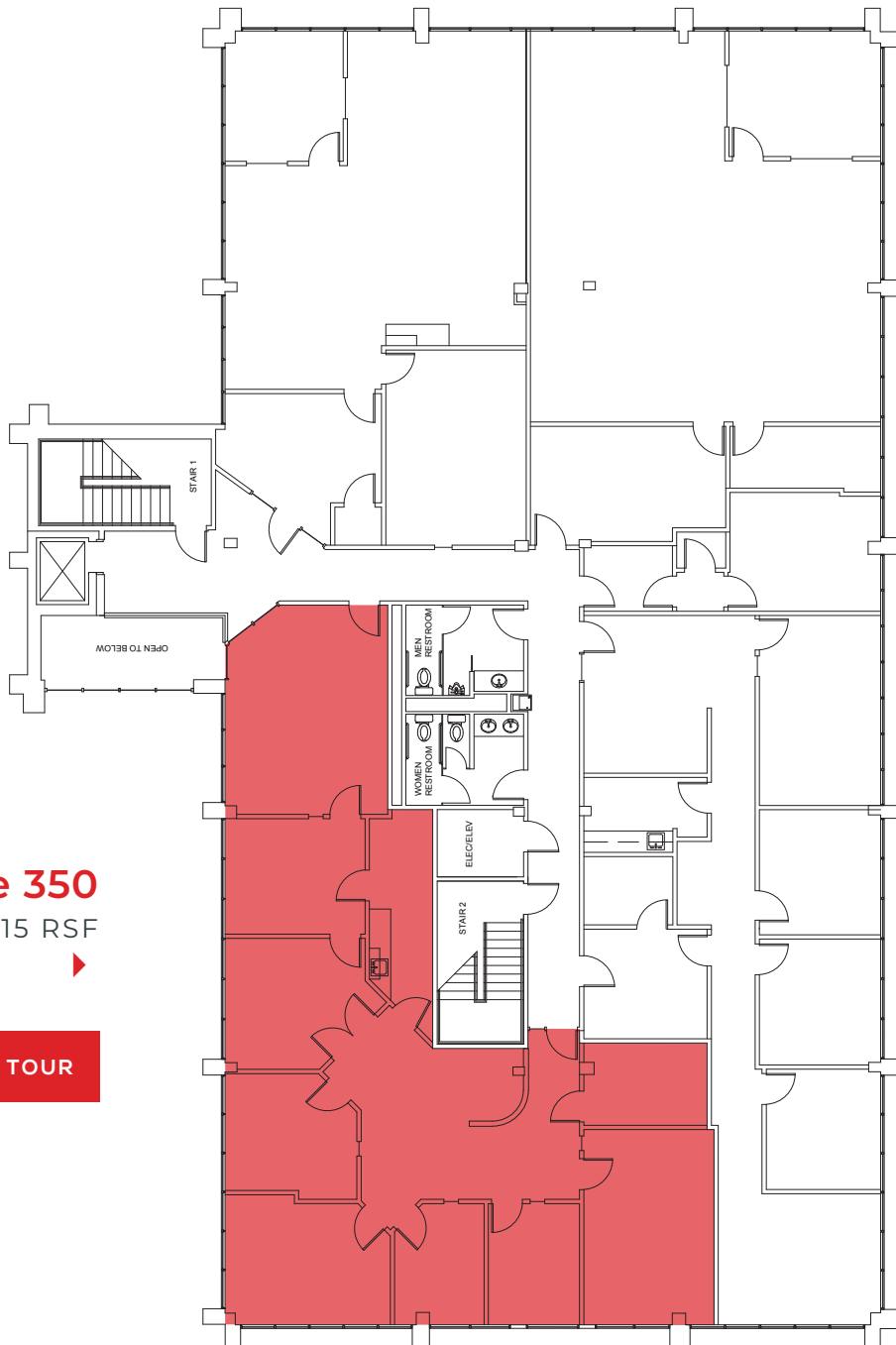


OFFICE // FOR LEASE



3

LEVEL  
THREE



**Suite 350**

2,415 RSF



 360° VIRTUAL TOUR

2512 SOUTH IH-35 // AUSTIN, TEXAS 78704

FOR MORE INFORMATION

STEPHEN PANNES  
SPANES@ECRTX.COM // 512.505.0018

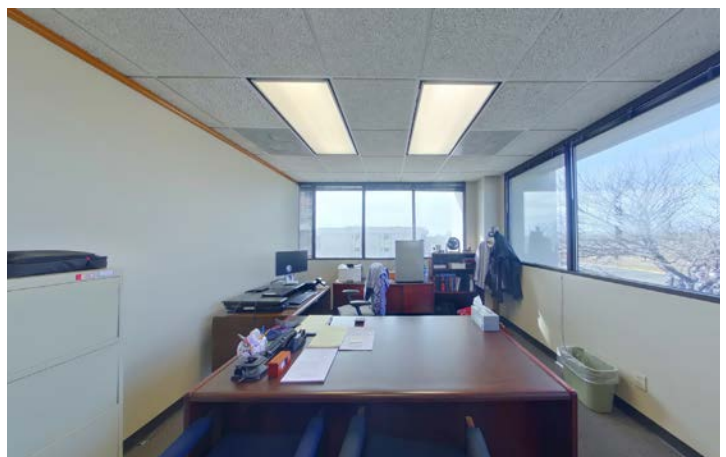
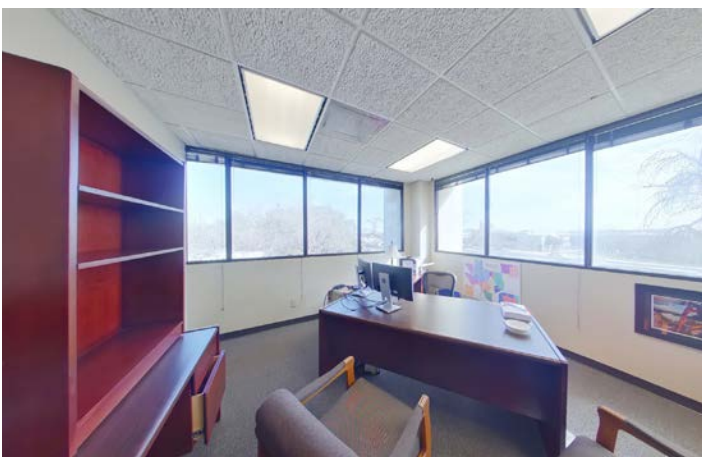
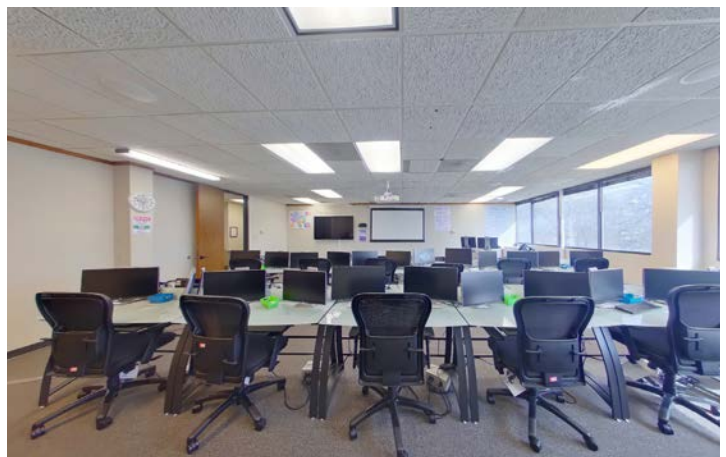
ECRTX.COM



OFFICE // FOR LEASE



# SECOND FLOOR



2512 SOUTH IH-35 // AUSTIN, TEXAS 78704



OFFICE // FOR LEASE



2512 SOUTH IH-35 // AUSTIN, TEXAS 78704







OFFICE // FOR LEASE



### Information About Brokerage Services

Texas law requires all real estate license holders to give the following information about brokerage services to prospective buyers, tenants, sellers and landlords.

#### TYPES OF REAL ESTATE LICENSE HOLDERS

- A BROKER is responsible for all brokerage activities, including acts performed by sales agents sponsored by the broker.
- A SALES AGENT must be sponsored by a broker and works with clients on behalf of the broker.

#### A BROKER'S MINIMUM DUTIES REQUIRED BY LAW (A client is the person or party that the broker represents):

- Put the interest of the client above all others, including the broker's own interests;
- Inform the client of any material information about the property or transaction received by the broker;
- Answer the client's questions and present any offer to or counter-offer from the client; and
- Treat all parties to a real estate transaction honestly and fairly.

#### A LICENSE HOLDER CAN REPRESENT A PARTY IN A REAL ESTATE TRANSACTION:

**AS AGENT FOR OWNER (SELLER/LANDLORD):** The broker becomes the property owner's agent through an agreement with the owner, usually in a written listing to sell or property management agreement. An owner's agent must perform the broker's minimum duties above and must inform the owner of any material information about the property or transaction known by the agent, including information disclosed to the agent or subagent by the buyer or buyer's agent.

**AS AGENT FOR BUYER/TENANT:** The broker becomes the buyer/tenant's agent by agreeing to represent the buyer, usually through a written representation agreement. A buyer's agent must perform the broker's minimum duties above and must inform the buyer of any material information about the property or transaction known by the agent, including information disclosed to the agent by the seller or seller's agent.

**AS AGENT FOR BOTH - INTERMEDIARY:** To act as an intermediary between the parties the broker must first obtain the written agreement of each party to the transaction. The written agreement must say who will pay the broker and, in conspicuous bold or underlined print, set forth the broker's obligations as an intermediary. A broker who acts as an intermediary:

- Must treat all parties to the transaction impartially and fairly;
- May, with the parties' written consent, appoint a different license holder associated with the broker to each party (owner and buyer) to communicate with, provide opinions and advice to, and carry out the instructions of each party to the transaction.
- Must not, unless specifically authorized in writing to do so by the party, disclose:
  - o that the owner will accept a price less than the written asking price;
  - o that the buyer/tenant will pay a price greater than the price submitted in a written offer; and
  - o any confidential information that a party specifically instructs the broker in writing not to disclose, unless required to do so by law.

**AS SUBAGENT:** A license holder acts as a subagent when aiding a buyer in a transaction without an agreement to represent the buyer. A subagent can assist the buyer but does not represent the buyer and must place interests of the owner first.

#### TO AVOID DISPUTES, ALL AGREEMENTS BETWEEN YOU AND BROKER SHOULD BE IN WRITING AND CLEARLY ESTABLISH:

- The broker's duties and responsibilities to you, and your obligations under the representation agreement.
- Who will pay the broker for services provided to you, when payment will be made and how the payment will be calculated.

**LICENSE HOLDER CONTACT INFORMATION:** This notice is being provided for information purposes. It does not create an obligation for you to use the broker's services. Please acknowledge receipt of this notice below and retain a copy for your records.

<b>Equitable Commercial Realty, PLLC</b>	<b>603700</b>	<b>mlevin@ecrtx.com</b>	<b>512.505.0000</b>
Licensed Broker/Broker Firm Name or Primary Assumed Business Name	License No.	Email	Phone
<b>Matt Levin</b>	<b>548312</b>	<b>mlevin@ecrtx.com</b>	<b>512.505.0001</b>
Designated Broker of Firm	License No.	Email	Phone
<b>Matt Levin</b>	<b>548312</b>	<b>mlevin@ecrtx.com</b>	<b>512.505.0001</b>
Licensed Supervisor of Sales Agent/Associate	License No.	Email	Phone
<b>Stephen Pannes</b>	<b>678894</b>	<b>spannes@ecrtx.com</b>	<b>512.505.0018</b>
Sales Agent/Associate's Name	License No.	Email	Phone

\_\_\_\_\_  
Buyer/Tenant/Seller/Landlord Initials

\_\_\_\_\_  
Date

Regulated by the Texas Real Estate Commission

Information available at [www.trec.texas.gov](http://www.trec.texas.gov)

FOR MORE INFORMATION

STEPHEN PANNES  
SPANNES@ECRTX.COM // 512.505.0018

ECRTX.COM